

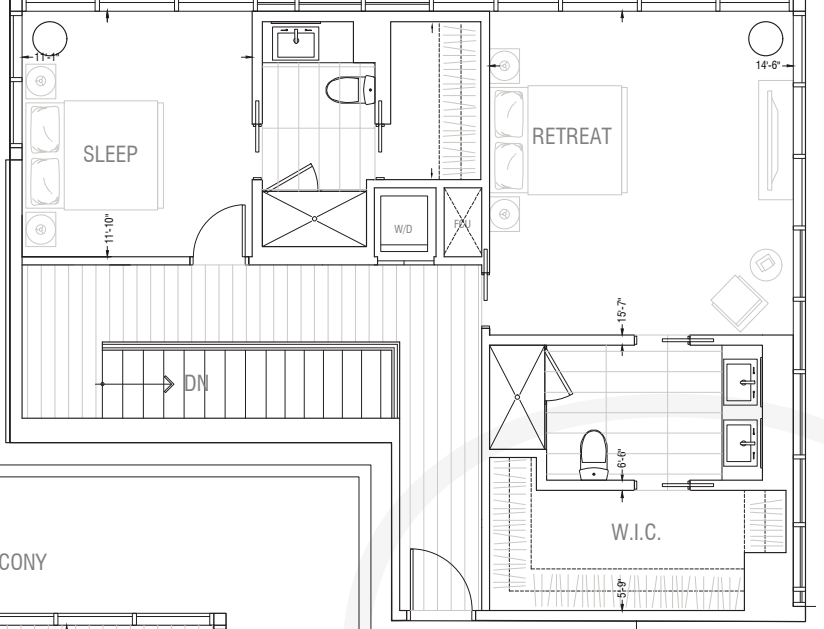


SKYTOWN ST4

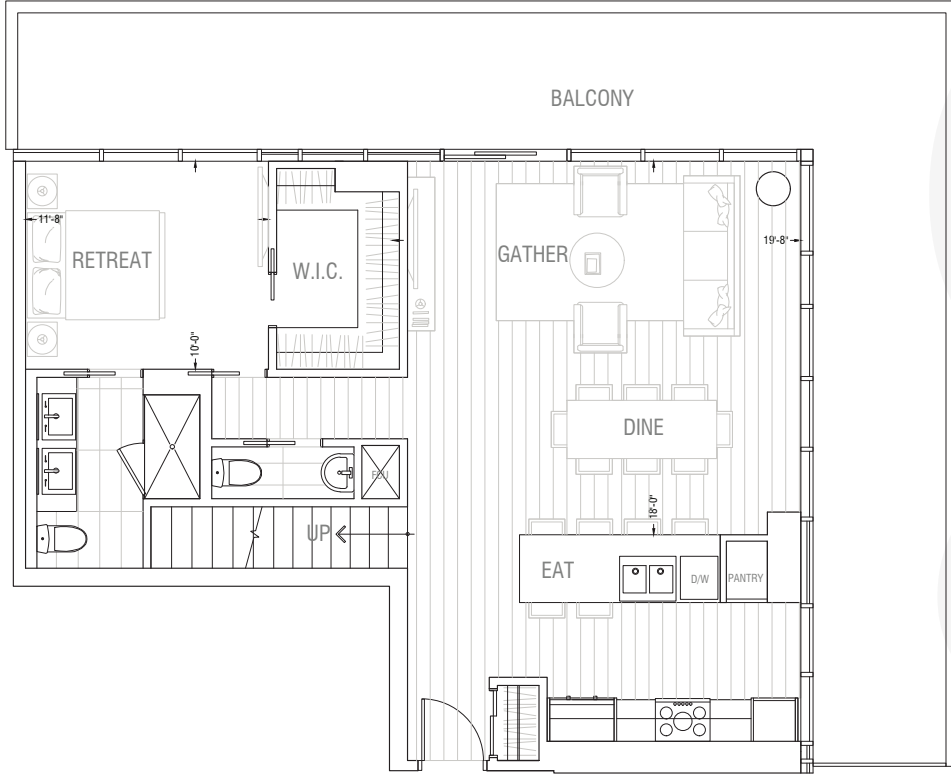
3 Bedrooms + 3.5 Bathrooms
1973 SQ.FT. INDOOR / 481 SQ.FT. OUTDOOR

2454 SQ.FT.

UPPER LEVEL

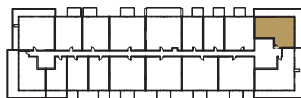


LOWER LEVEL

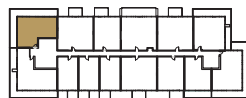


Suite Count: 2

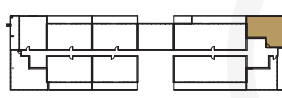
LEVEL 7



WEST BUILDING

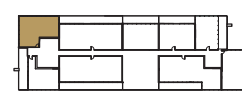


EAST BUILDING



WEST BUILDING

LEVEL 8



EAST BUILDING

THIS DOCUMENT IS FOR DISCUSSION PURPOSES ONLY. ALL LEGAL DOCUMENTS CAN BE FOUND IN THE CONDO DISCLOSURE DOCUMENTS PACKAGE. THE DEVELOPER AND BUILDER RESERVE THE RIGHT TO MAKE MODIFICATIONS AND CHANGES TO THE BUILDING, ANY UNIT, PARKING AREA AND STORAGE AREA DESIGN, SPECIFICATIONS, FEATURES AND FLOOR PLANS IN ORDER TO MAINTAIN THE HIGH STANDARDS OF THIS DEVELOPMENT OR TO COMPLY WITH MUNICIPAL REQUIREMENTS. THE SQUARE FOOTAGE AND ROOM DIMENSIONS ARE BASED ON ARCHITECTURAL DRAWINGS AND MEASUREMENTS. THE LOCATION OF UTILITIES MAY NOT BE ACCURATELY DEPICTED HEREIN. FURNITURE LAYOUTS DEPICT STANDARD FURNISHING SIZES AND ARE INTENDED FOR REFERENCE ONLY. ALL SIZES, SQ FOOTAGES AND DIMENSIONS ARE APPROXIMATE AND THE ACTUAL AREA AND DIMENSIONS MAY VARY FROM THE PRELIMINARY PLANS TO THE FINAL SURVEY PLAN. POINT LOADS AND STRUCTURAL COLUMN LOCATIONS MAY VARY FROM MARKETING DRAWINGS. REFER TO ARCHITECTURAL DRAWINGS FOR SPECIFIC UNIT DECK SIZES, DECK SIZES AND LOCATION, STRUCTURAL COLUMNS AND POINT LOADS ARE TYPICAL AND MAY NOT REPRESENT ACTUAL SIZE AND LOCATION, REFER TO ARCHITECTURAL DRAWINGS FOR SPECIFIC UNIT DETAILS. ERRORS AND OMISSIONS EXCEPTED.