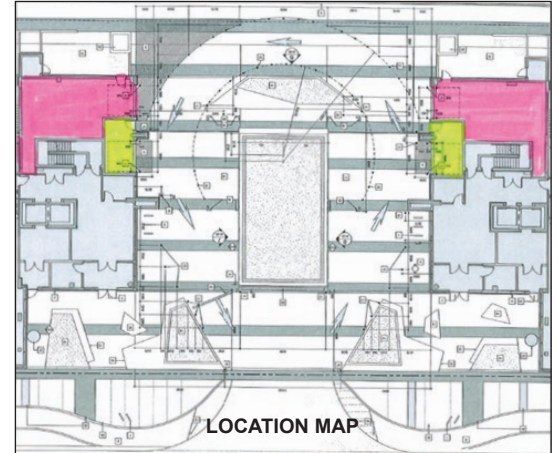


GARBAGE ROOM ACCESS / LOCATIONS

A reminder that Residential Waste and Recycling Rooms are keyed only – there is no FOB access to the Residential Waste and Recycling rooms. The Residential Waste and Recycling rooms are located at the back of the building, on the south side. You will need your key (*front lobby key*) for access.

The Residential Waste and Recycling Rooms are the ones highlighted pink in the Location Map graphic below. The green highlighted rooms are for commercial tenants only. The doors for each room are also labelled as such.

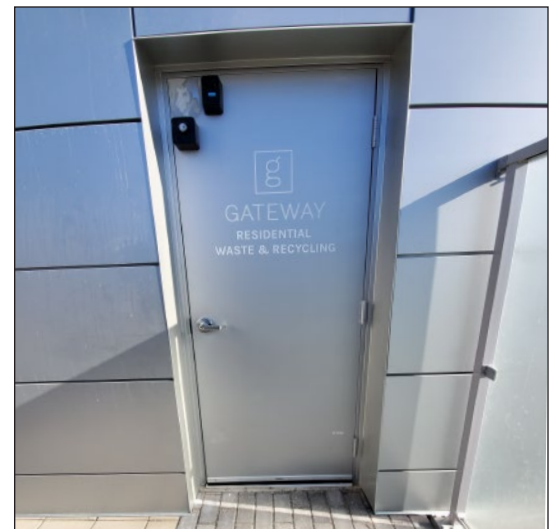
If you inadvertently had access to the Commercial Waste and Recycling Rooms via your FOB, this has now been corrected and you no longer have access. Please use the Residential Waste rooms as designated.



ADDITIONAL SECURITY MEASURES

Parking Garage

We are in the process of adding in an additional garage door at Level P1 parking ramp that leads into the residential parking areas. This is so that we may prevent any non-residents from accessing the residential parking stalls. Your existing garage door opener for the parkade ramp door & arm gate will operate this new garage door at Level P1. We anticipate this to be fully operational by May 6, 2020. The arm gates will be removed once these new doors are operational.



Exterior Man Doors

On the ground floor at Level 1, East end of building 8445 and West end Level 1 building 8505, we have now installed MAGLocks. Given the concealed nature of these two doors we felt it necessary to take extra precaution to protect these doors. This work is now completed. NOTE: there is a “Release Button” from within the hall that you will need to press to exit.

Street Parking

Just a reminder to our residents that on-street parking on Broadcast Avenue SW is currently free, however there is a time limit of 2 hours Monday to Friday between the hours of 9:00am to 6:00pm. The City of Calgary Parking Authority is now patrolling Broadcast Avenue SW so please obey the parking laws to avoid receiving any tickets.

COVID-19 Lockdown

This continues until further notice. Parkade access is restricted unless you have a garage door opener.

Commercial lobbies are on 24 hour lockdown. Residential lobby exterior access doors are unlocked from 8:30am to 5:00pm only and secured thereafter.